

LEGUAN[®]

190



Leguan main technical details

- Available with tracks or 4WD
- New 3-stage telescope boom, leaf chain design with built in sensors (length and inclination)
- Direct hydraulic control for boom movements and new type protection for energy chain
- Safety devices and outreach controlled by IFM mobile PLC
- Automatic and manual leveling
- Automatic outreach monitoring system, allowed outreach is dependant on the work cage load
- Wireless remote control for the driving and outrigger operation (optional item)
- Automatic revolution control system for Kubota diesel engine
- Automatic main switch (shuts down all the electrical consumption)



New tailor made trailer for L190, axle capacity 3500 kg



Work cage control center with automatic leveling and automatic transmission for driving, max. driving speed 5.2 km/h



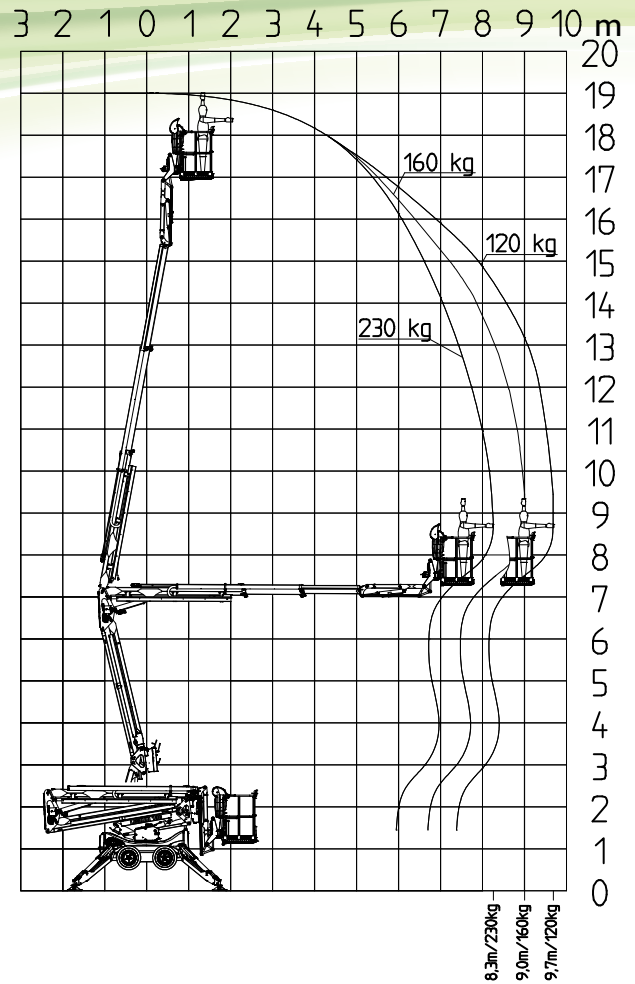
Lower control center is a standard feature in L190 unit



190 Reliable and versatile

	LEGUAN 190
Max. work cage load	230 kg / 2 persons
Max. working height	19.00 m
Max. platform height	17.00 m
Max. outreach	8.3 m (230 kg) / 9.7 m (120 kg)
Transport length	5.05 m
Platform dimensions W x L	1.33 x 0.75 m
Rotation of basket	90° (±45°)
Slewing	360°
Gradeability	35 % (20°)
Transport height	2.10 m
Outrigger spread working	3.78 x 3.83 m
Max. slope for outriggers	22 % (13°)
Weight with tracks / tyres	2660 kg / 2660 kg
Power source	Kubota 14 hp diesel
	230 V / 110 V
Drive system: hydraulic	4WD
	Tracks
Drive speed max.	2.6 km/h (5.2 km/h*)

* Optional item



Excellent outreach



Excellent driveability even in tough conditions



Good leveling capacity



Some optional items, horn, flash lights on outriggers, LED work light at work cage, LED lights for operating levers

LEGUAN®

Ylötie 10, FI-33470 Ylöjärvi, Finland
 Tel. +358 3 347 6400 Fax +358 3 347 6446
 leguan@avantteco.com

Leguan has a policy of continuing improvement, and retains the right to change specifications without notice. © 2017 LEGUAN Lifts Oy. All rights reserved.

www.leguanlifts.com